

Orthodontic elastics will add resistance to buccal opening during sleep and will help stabilizing the effectiveness of the D-SAD before shortening the rods on the D-SAD.

When storing the D-SAD it is important to remove the elastics from the bottom tray in order to preserve and prolong their life time.

Note that the vast majority of denture cleaning solution will not affect the durability of the elastics

## Tool you will need to work on the D-SAD

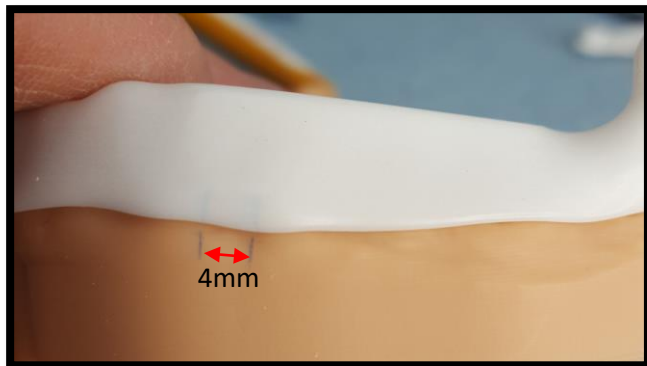
**RIO GRANDE USA LYNX**  
Crown Saw #348513



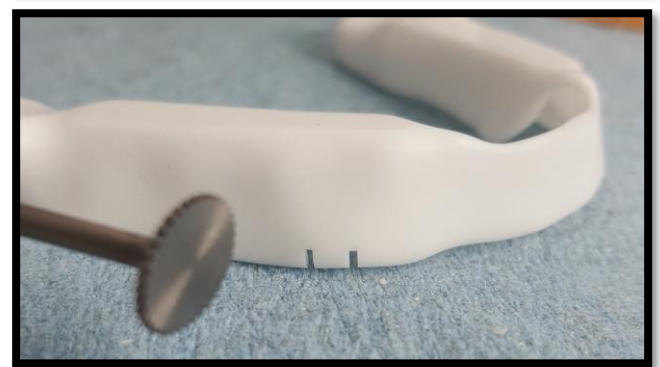
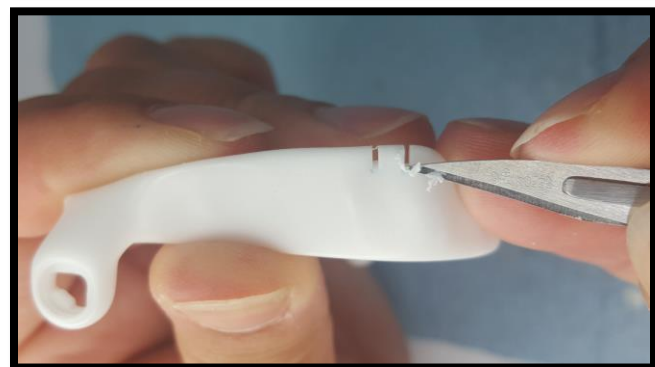
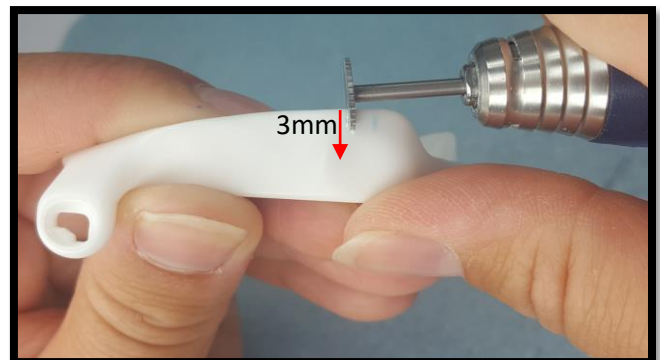
**RIO GRANDE USA LYNX™**  
High Speed 3/32" Twist Drills  
#349206



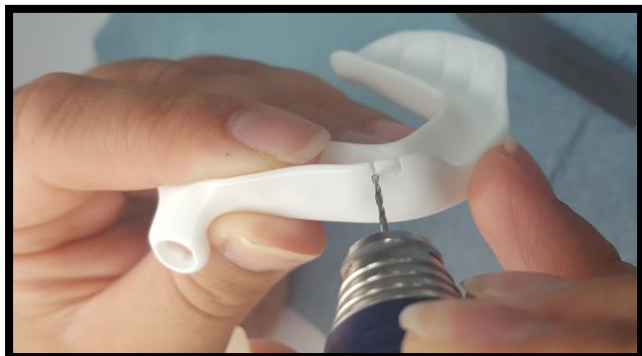
**RIO GRANDE USA**  
Miniature Felt Point  
#330172



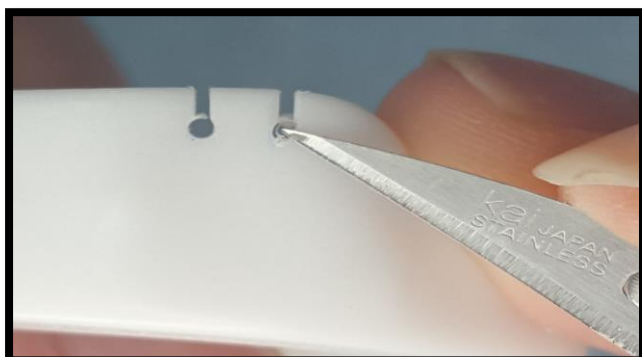
1. Generally, the grooves are performed between the canine and 1st pre molar on the mandibular splint. The distance between the groove is 4 to 5mm and about 3mm deep
2. On the model, draw the position of the elastic and transfer to the D-SAD splint
3. The crown saw bur use to make the elastic grooves need to run at high speed
4. Clean and remove all excess of material once the grooves are done by using a scalpel



# Performing D-SAD Elastic Groove



5. To make the holes, you will need to insert a 3/32" high speed twist drill at the bottom and start drilling.



6. Clean and remove all excess of material around the holes
7. Polish all sides using a felt point bur



Orthodontic Elastics  
5/16" (7.9mm)  
4 1/2 oz (130gm)

