

PHASE ONE:

- 1. Prophyl- pumice, rinse and dry all of the tooth surfaces.
- 2. Apply Gel Etchant only to the buccal and lingual surfaces. **IMPORTANT: DO NOT** etch the occlusal surface.
- 3. After etching for 30 seconds, thoroughly rinse and suction the etchant off the tooth surface for 10 seconds.



PHASE TWO:

- 1. Thoroughly dry the teeth.
- 2. Apply a single coat of Assure Plus Primer to the entire buccal surface and buccal cusp tips **ONLY**. **IMPORTANT: DO NOT** apply the primer to the occlusal or lingual surfaces.
- 3. Air dry for 3 seconds.
- 4. Keep the area isolated and moisture free.



PHASE THREE:

- 1. Once the teeth are primed and isolated, use the dual-tube applicator to evenly apply a layer of Self-Mix Band Lok to the tooth side of the appliance. **IMPORTANT NOTE: Band Lok has a 4-minute working time so DO NOT** preload appliance. Apply Band Lock just before you are ready to deliver.
- 2. Seat the appliance completely to express the excess flash.
- 3. Removal of excess- cure the flash for 1 **SECOND ONLY** with your curing light to make the flash cohesive and allow it to be removed as a single piece.



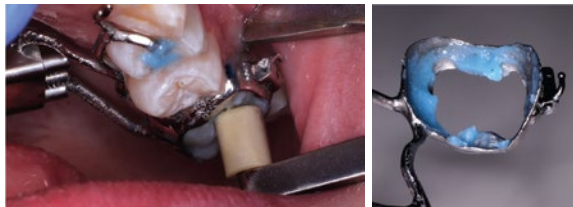
PHASE FOUR:

1. Finish curing with your curing light from the occlusal for 30 seconds per tooth.
2. Remove the isolation and wait for 5 minutes for bonding to be complete before activating the appliance.



REMOVAL:

1. Since primer was not applied to the lingual surface of the bonded tooth it should be easy to break this bond.
2. To remove the Buccal side use a traditional band removal pliers to break away the appliance from the tooth. Because Band Lok bonds chemically to metal – the majority if not all cement will remove with the appliance.



Need material to seat your Metal printed device?

Metal Seating Kit: \$22*

5006119



Blue Gel Etch



Self Mix Band-Lok Blue



Assure Plus

**Metal Seating Kit is good for one patient.*

To order, contact: 800-423-3270 Ext 2

FABRICATED BY:



SML® - Space Maintainers Laboratories
9129 Lurline Ave, Chatsworth, CA 91311
1-800-432-3270
www.SMLglobal.com

Doctor Instructions



REV.C.MAY.2018